



Tours Catalog

WEDDINGS & EVENTS



DISCOVER AND EXPERIENCE THE BEST OF EL SALVADOR!

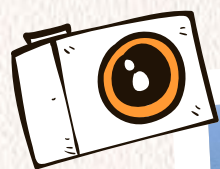


OPTION 1

NATIONAL PARK

“Cerro Verde”

AND SANTA ANA VOLCANO CHALLENGE



Starting from \$50.00 per person

Special rate available with a minimum of 10 participants

Included:

- ✔ Tourist transportation with A/C.
- ✔ Tour leader.
- ✔ Private “mountain guide” (exclusive for the group).
- ✔ Visit to Cerro Verde National Park (entrance included).
- ✔ Guided hike – Santa Ana Volcano.
- ✔ Snack on board and water bottle.
- ✔ First aid kit.

Not included:

- ✔ Special contribution for access to “Complejo Los Volcanes” National Park.

Optional:

- ✔ Visit to Crater Coffee Shop & Bistro.
- ✔ Photo coverage.



6:00 AM



Pick-up time

DIFFICULTY
MEDIUM



Request more
information

IZALCO HOTEL &
BEACH RESORT



Starting point

APPROXIMATELY
9 HOURS



Duration



OPTION 2

ROUTE OF

“Las Flores”

JUAYÚA, APANECA, CONCEPCIÓN DE ATACO AND SALCOATITÁN

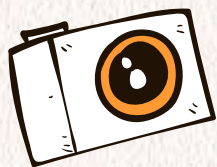


Starting from \$55.00 per person*

(Special rate available with a minimum of 10 participants*)

Included:

- ✔ Tourist transportation with A/C.
- ✔ Tour leader.
- ✔ Visit to the towns of Juayúa, Apaneca, Concepción de Ataco y Salcoatitán.
- ✔ Optional visit to Café & “ALBANIA” Maze *.
(Largest natural Maze in Central America).
- ✔ Snack on board and water bottle.
- ✔ First aid kit.
- ✔ Check other attractions or available activities at the destinations places to visit (optional, additional cost).



6:30 AM



Pick-up time

DIFFICULTY
EASY



Request more information

SAN SALVADOR



Starting point

APPROXIMATELY
10 HOURS



Duration

OPTION 3

ROUTE OF LAS FLORES AND

“Thermal Spa”

COFFEE AND ALBANIA MAZE, “EL CARMEN COFFEE ESTATE”, CONCEPCIÓN ATACO, ALICANTE HOT SPRINGS

Starting from \$65.00 per person*

(Special rate available with a minimum of 10 participants*)

Included:

- ✔ Tourist transportation with A/C.
- ✔ Tour leader.
- ✔ Visit to Café & “ALBANIA” Maze *. (**Largest natural Maze in Central America**).
- ✔ INCLUDED Entrance and guided tour-Traditional coffee tour.
 - ✔ Local Guide: “El Carmen Coffee Estate”.
- ✔ Tasting of 1 cup of coffee (“**El Carmen Coffee Estate**”).
- ✔ Entrance Included-ALICANTE HOT SPRINGS.
Snack on board and water bottle.
- ✔ First aid kit.

Not included

- ✔ Special contribution for access to “Complejo Los Volcanes” National Park.

Optional

- ✔ Visit to Crater Coffee Shop & Bistro.
- ✔ Photo coverage.



6:30 AM



Pick-up time

DIFFICULTY
EASY



Request more
information

SAN SALVADOR



Starting point

APPROXIMATELY
12 HOURS



Duration



OPTION 4

“Suchitoto”



Starting from \$42.00 per person*

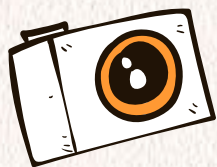
(Special rate available with a minimum of 10 participants*)

Included

- ✔ Tourist transportation with A/C.
- ✔ Tour leader.
- ✔ Visit to the colonial town of Suchitoto: Santa Lucía Church, Casco Urbano, Craft Store and more.
- ✔ INCLUDED Entrance and visit to Suchitlán Lake.
- ✔ Snack on board and water bottle.
- ✔ First aid kit.

Optional

- ✔ Walk and Visit to Los Tercios Waterfall.
- ✔ Check other attractions or available activities at the destinations places to visit (optional, additional cost).



9:00 AM



Pick-up time

DIFFICULTY
EASY



Request more
information

SAN SALVADOR



Starting point

APPROXIMATELY
6 HOURS



Duration

“El Boquerón”

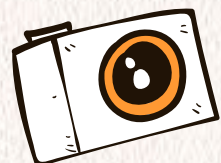
NATIONAL PARK SAN SALVADOR VOLCANO,
PICNIC STEAK HOUSE & IMAGINE SLIDE

Starting from \$45.00 per person*

(Special rate available with a minimum of 10 participants*)

Includes

- ✓ Air-conditioned tour bus.
- ✓ Tour leader.
- ✓ Admission.
- ✓ Guided tour and hike through “El Boquerón” National Park (San Salvador Volcano) – ADMISSION INCLUDED.
- ✓ Visit to the PICNIC STEAK HOUSE themed restaurant.
 - ✓ Snack on board and a bottle of water.
 - ✓ First aid kit.
- ✓ Additional - Optional: IMAGINE SLIDE \$5.00 per person* (1 ticket, minimum age 12 and height 1.20 m or taller to ride).



9:00 AM



Pick-up time

DIFFICULTY
EASY



Request more
information

SAN SALVADOR



Starting point

APPROXIMATELY
6 HOURS



Duration



OPTION 6

THE

“7 Waterfalls”

HOT SPRING SPA, 1800 HOUSE
“LOS NARANJOS”*, JUAYÚA CRAFT MARKET,
ALICANTE HOT SPRINGS

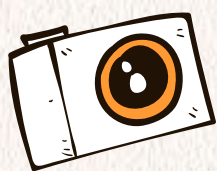


From \$68.00 per person*

(Special rate available for groups of 10 or more*)

Includes

- ✓ Air-conditioned tour bus.
- ✓ Tour leader.
- ✓ Local mountain guide (exclusive to the group).
- ✓ ENTRANCE & GUIDED TOUR - “The 7 Waterfalls” Tour (Approximately 3 hours).
- ✓ Visit to “Casa 1800” Restaurant, Los Naranjos (optional*; purchase required)
- ✓ ENTRANCE INCLUDED - Alicante Hot Springs
- ✓ Snack on board and bottle of water.
- ✓ First aid kit.



6:30 AM



Pick-up time

DIFFICULTY
MEDIUM-HIGH



Request more
information

SAN SALVADOR



Starting point

APPROXIMATELY
12 HOURS



Duration

OPTION 7

“San Salvador”

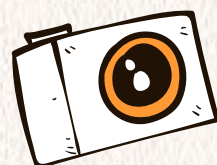
HISTORIC CENTER - NATIONAL HANDICRAFT MARKET- EL BOQUERÓN TOUR

From \$40.00 per person*

(Special rate available for groups of 10 or more*)

Includes

- ✓ Air-conditioned tour bus.
- ✓ Tour leader.
- ✓ Local guide (exclusive to the group).
- ✓ Guided tour of San Salvador’s Historic Center: “El Rosario” Church, Plaza Libertad, Plaza Morazán, National Palace*, San Salvador Metropolitan Cathedral, National Theater, local shops, and more.
- ✓ Visit to the National Handicrafts Market.
- ✓ Visit to “Las Brumas” Café & Restaurant (*optional, purchase required).
- ✓ Snack on board and bottle of water.
- ✓ First aid kit.
- ✓ Check out other attractions and activities available at the destinations to be visited* (Optional, for an additional fee).



9:00 AM



Pick-up time

DIFFICULTY
EASY



Request more
information

SAN SALVADOR



Starting point

APPROXIMATELY
7 HOURS



Duration



OPTION 8

“Tazumal”

ARCHAEOLOGICAL PARK - “CASA BLANCA”,
ARCHAEOLOGICAL PARK-LAKE COATEPEQUE
AND SANTA ANA”

Starting at \$50.00 per person*

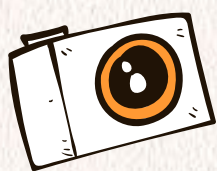
(Special rate available for groups of 10 or more*)

Includes

- ✓ Air-conditioned tour bus.
- ✓ Tour leader.
- ✓ Site guide (exclusive to the group).
- ✓ Guided tours and walks in archaeological parks.
- ✓ Snack on board and bottle of water.
- ✓ First aid kit.

Optional

- ✓ Visit to El Faro del Lago Restaurant, Coatepeque (Consumption required).
- ✓ Entrance fees NOT INCLUDED* (Prices vary depending on visitor’s nationality).



7:00 AM



Pick-up time

**DIFFICULTY
EASY**



Request more
information

SAN SALVADOR



Starting point

**APPROXIMATELY
10-11 HOURS**



Duration

OPTION 9

“Tamanique”

WATERFALLS, AND “EL TUNCO BEACH”,
LA LIBERTAD

Starting at \$48.00 per person*

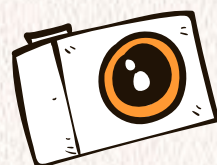
(Special rate available for groups of 10 or more*)

Includes

- ✓ Air-conditioned tour bus.
- ✓ Tour leader.
- ✓ Local mountain guide (exclusive to the group).
- ✓ ENTRANCE & GUIDED TOUR - “Tamanique Waterfall” Tour
- ✓ Free time at “El Tunco” Beach (restaurants, bars, and more).
- ✓ ENTRANCE INCLUDED - Tamanique Waterfalls.
- ✓ Snack on board and bottle of water.
- ✓ First aid kit.

Optional:

- ✓ Visit to La Libertad Port (boardwalk, SURFCITY Park, and surrounding area).



8:30 AM



Pick-up time

DIFFICULTY
MEDIUM



Request more
information

SAN SALVADOR

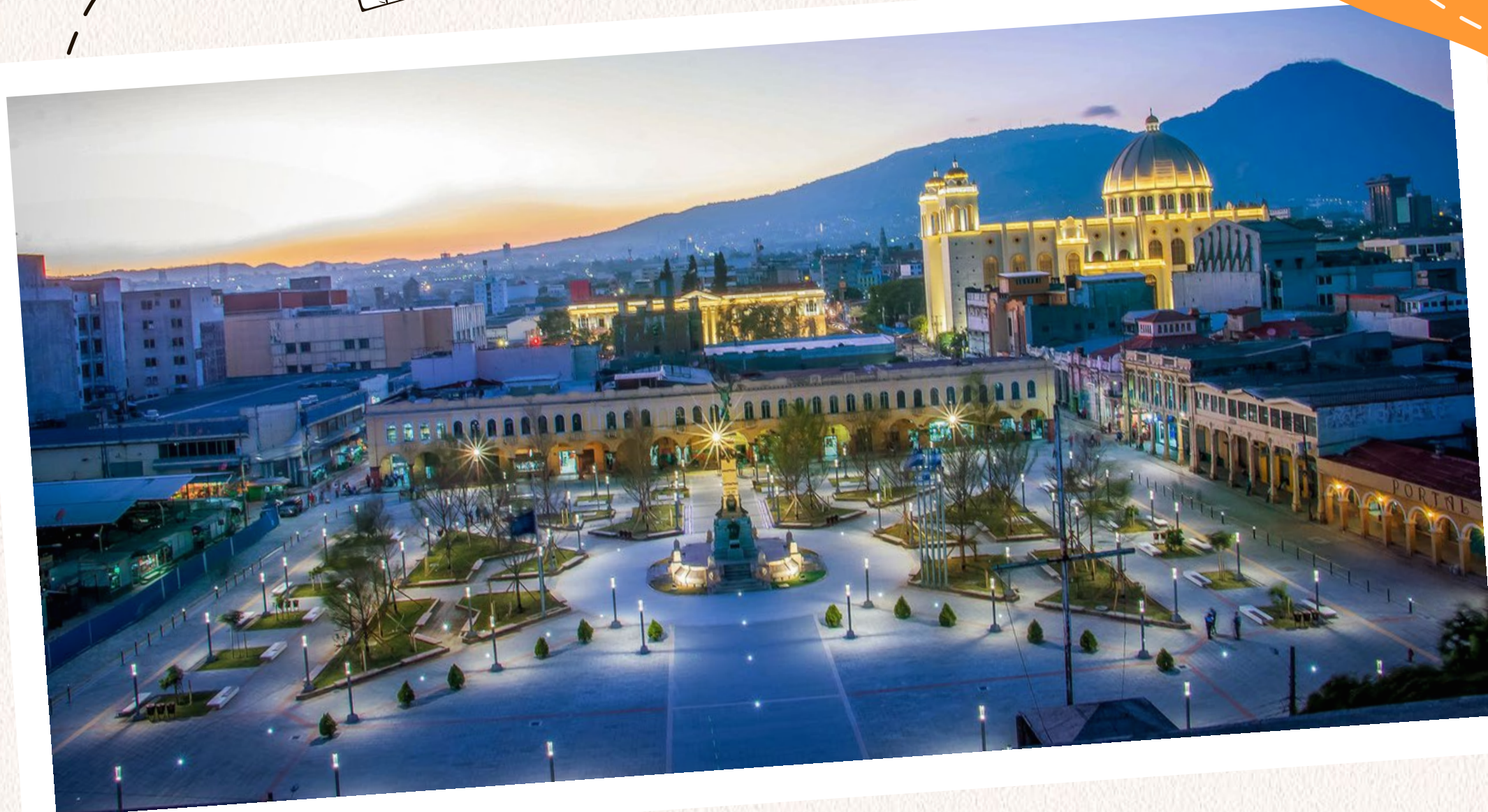


Starting point


APPROXIMATELY
8 HOURS




Duration




¡MÁS QUE VIAJES, EXPERIENCIAS ÚNICAS CON DON BOSCO TRAVEL!

 (+503) 7820-5478

 Don Bosco Travel

 @donboscotravel

 donboscotravel@gmail.com

PRICES FOR EACH TOUR MAY VARY IF THE MINIMUM NUMBER OF PARTICIPANTS IS NOT MET.